

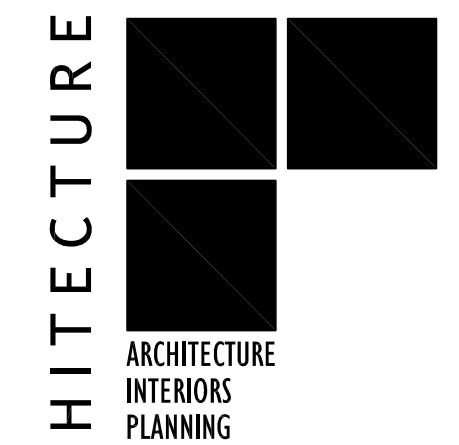
ELECTRICAL LEGEND

SYMBOL	DESCRIPTION	SYMBOL	DESCRIPTION	SYMBOL	DESCRIPTION
LIGHTING NUMBER WITHIN OR ADJACENT TO FIXTURE INDICATES FIXTURE TYPE. RE: FIXTURE SCHEDULE		PAGING/SOUND/INTERCOM SUBSCRIPTS: R RECESSED WP WEATHERPROOF S SURFACE VC VOLUME CONTROL DB DOUBLE BAFFLE		FIRE ALARM FIRE ALARM CONTROL PANEL	
	FLUORESCENT LIGHTING FIXTURE, RECESSED IN CEILING		SPEAKER RECESSED IN CEILING, UNO		FIRE ALARM SYSTEM ANNUNCIATOR
	FLUORESCENT LIGHTING FIXTURE ON EMERGENCY OR STANDBY POWER SOURCE		SPEAKER WALL MOUNTED		MANUAL PULL STATION (MTD. 46" AFF TO CENTER, UNO)
	FLUORESCENT LIGHTING FIXTURE SURFACE MOUNTED OR PENDANT MOUNTED FROM CEILING, UNO		SPEAKER - TRUMPET TYPE, WALL MOUNTED, UNO		ALARM HORN
	FLUORESCENT STRIP LIGHTING FIXTURE		BUZZER		COMBINATION HORN/STROBE (MOUNTING HEIGHT AS REQ. BY LOCAL AHJ)
	FLUORESCENT STRIP LIGHTING FIXTURE ON EMERGENCY OR STANDBY POWER SOURCE		VOLUME CONTROL WALL MOUNTED 46" AFF TO CENTER, UNO		ALARM BELL
	FLUORESCENT LIGHTING FIXTURE WALL MOUNTED		INTERCOM STATION CALL-IN SWITCH		COMBINATION BELL/STROBE (MOUNTING HEIGHT AS REQ. BY LOCAL AHJ)
	LIGHTING FIXTURE CEILING MOUNTED	CIRCUITING/RACEWAY BRANCH CIRCUIT CONCEALED ABOVE CEILING OR WITHIN WALL. TICK MARKS INDICATE NUMBER OF CONDUCTORS, (P) INDICATES GROUND CONDUCTOR, NO TICK MARKS INDICATES 2 #12, 1 #12GND., 3/4" C., UNO			CEILING MOUNTED ALARM STROBE
	LIGHTING FIXTURE ON EMERGENCY OR STANDBY POWER SOURCE		CONDUIT ROUTED EXPOSED		CEILING MOUNTED COMBINATION HORN/STROBE
	LIGHTING FIXTURE WALL MOUNTED		CONDUIT ROUTED CONCEALED WITHIN OR BELOW FLOOR OR CONCRETE		ALARM STROBE LIGHT (MOUNTING HEIGHT AS REQ. BY LOCAL AHJ)
	WALLWASH LIGHTING FIXTURE. OPEN SIDE INDICATES DIRECTION OF ILLUMINATION.		HOMERUN TO PANEL INDICATED. ARROWHEADS INDICATE NUMBER OF CCTS.		SMOKE DETECTOR (UF = UNDERFLOOR)
	EMERGENCY WALL PACK FIXTURE		PART CIRCUIT HOMERUN		HEAT DETECTOR
	EXIT LIGHT WALL MOUNTED 8"-0" AFF TO CENTER, UNO SHADED AREA(S) INDICATE ILLUMINATED FACE(S)		LOW VOLTAGE WIRING IN CONDUIT		DUCT MOUNTED SMOKE DETECTOR
	EXIT LIGHT CEILING MOUNTED		CONDUIT TURNING UP		FLOW SWITCH
	EXTERIOR POLE MOUNTED LIGHTING FIXTURE		CONDUIT TURNING DOWN		TAMPER SWITCH
SWITCHES MOUNT 46" AFF TO CENTER, UNO SUBSCRIPTS: WP WEATHERPROOF (IN USE) (CAST METAL) EP EXPLOSIONPROOF LV LOW VOLTAGE P PILOT LIGHT C COUNTER TOP MOUNTED (MOUNT 5" ABOVE BACKSPASH TO CENTER)			CONDUIT CHANGE IN ELEVATION		PRESSURE SWITCH
	SINGLE POLE, SINGLE THROW WALL SWITCH		CONDUIT CAPPED FOR FUTURE USE		DOOR HOLDER
	DOUBLE POLE, SINGLE THROW WALL SWITCH		CONDUIT SEAL (APPLETON #EYSEF OR EQUAL)		CONTROL ZAM
	THREE WAY WALL SWITCH		EXISTING CONDUIT TO BE REMOVED		INDIVIDUAL ADDRESSABLE MODULE
	FOUR WAY WALL SWITCH		CABLE TRAY		MONITOR MODULE
	DIMMER SWITCH		WIREWAY	SECURITY/INTRUSION ALARM INTRUSION ALARM DOOR SWITCH	
	PRESET LIGHTING CONTROL ENTRY SWITCH		DUCTBANK		REMOTE DOOR LOCK/UNLOCK CONNECTION
	KEY SWITCH, LEVITON #122*-2KL SERIES OR APPROVED EQUAL WITH STANLESS STEEL COVERPLATE.		BUSWAY		DOOR ENTRY DEVICE CONTACT
	LOW VOLTAGE SWITCH	BELOW RAISED ACCESS FLOOR 3/4" LIQUIDTIGHT FLEXIBLE METALLIC CONDUIT WITH PULLWIRE FOR TELECOMMUNICATIONS			DOOR EXIT DEVICE CONTACT
	LOW VOLTAGE MOMENTARY CONTACT SPDT, CENTER OFF, KEY SWITCH, ILC #KSS SERIES OR APPROVED EQUAL WITH STANLESS STEEL COVERPLATE.	3/4" LIQUIDTIGHT FLEXIBLE METALLIC CONDUIT WITH 2 #12, 1 #12 GND. FOR POWER, UNO			DOOR OPERATOR CONNECTION
	MANUAL MOTOR STARTER	POWER DISTRIBUTION 480V PANELBOARD SURFACE MOUNTED, UNO			CARD READER
	OCCUPANCY SENSOR WALL SWITCH		480V PANELBOARD FLUSH MOUNTED, UNO		SECURITY CAMERA
	DIGITAL TIMER SWITCH		208V PANELBOARD SURFACE MOUNTED, UNO	ELEMENTARY DIAGRAM CIRCUIT BREAKER XX = TRIP SIZE YY = FRAME SIZE	
RECEPTACLES MOUNT 18" AFF TO CENTER, UNO SUBSCRIPTS: GFI GROUND FAULT CIRCUIT INTERRUPTER WP WEATHERPROOF (IN USE) (CAST METAL) EP EXPLOSIONPROOF DL DAMP LOCATION FLIPCOVER SP SURGE PROTECTED IG ISOLATED GROUND C COUNTER TOP MOUNTED (MOUNT 5" ABOVE BACKSPASH TO CENTER)			208V PANELBOARD FLUSH MOUNTED, UNO		DRAW OUT CIRCUIT BREAKER
	SIMPLEX RECEPTACLE OUTLET		SAFETY DISCONNECT SWITCH <small>XX = FUSE SIZE (NF=NON-FUSED) YY = SWITCH SIZE</small>		FUSE
	DUPLEX RECEPTACLE OUTLET		SAFETY DISCONNECT SWITCH PROVIDED WITH EQUIPMENT		SWITCH
	QUADPLEX RECEPTACLE OUTLET		MOTOR STARTER <small>X = STARTER NEMA SIZE YY = MCP SIZE, UNO (FYY=FUSE SIZE)</small>		FUSED SWITCH
	250V, TWIST LOCK, L6-20R RECEPTACLE OUTLET		COMBINATION MOTOR STARTER AND DISCONNECT SWITCH <small>X = STARTER NEMA SIZE YY = MCP SIZE, UNO (FYY=FUSE SIZE)</small>		TRANSFORMER
	CLOCK OUTLET		COMBINATION MOTOR STARTER/DISCONNECT SWITCH OR CONTROL PANEL PROVIDED WITH EQUIPMENT		DELTA PRIMARY, WYE GROUNDED SECONDARY
	125/250V, NEMA 14-50R RECEPTACLE MOUNTED 36" AFF, UNO. PROVIDE MATCHING PIGTAIL FOR EACH OUTLET SHOWN ON DRAWINGS.		VARIABLE FREQUENCY DRIVE		MEDIUM VOLTAGE LOADBREAK SEPARABLE CONNECTOR
	SIMPLEX FLOOR OUTLET		MOTOR (HORSEPOWER AS INDICATED)		MEDIUM VOLTAGE DEADBREAK SEPARABLE CONNECTOR
	DUPLEX FLOOR OUTLET		TRANSFORMER		GROUND
	QUADPLEX FLOOR OUTLET		JUNCTION BOX		POTENTIAL TRANSFORMER
COMMUNICATIONS PROVIDE 4" SQUARE, 2-1/8" DEEP BOX WITH APPROPRIATE SINGLE-GANG DEVICE RING FLUSH MTD 18" AFF TO CENTER AND 3/4" CONDUIT STUBBED OUT ABOVE AN ACCESSIBLE CEILING, UNO. PROVIDE AND TERMINATE CABLING AS REQUIRED AND SPECIFIED.			PULL BOX		CURRENT TRANSFORMER
	TELEPHONE OUTLET		UNDERFLOOR DUCT JUNCTION BOX		OVERLOAD RELAY
	WALL MOUNT TELEPHONE AT 54" AFF TO CENTER, UNO.	CONTROL/MISC PUSHBUTTON STATION			LIGHTNING ARRESTOR
	DATA OUTLET		PHOTOELECTRIC CELL. MOUNT FACING NORTH WHENEVER POSSIBLE		AMMETER
	COMBINATION TELEPHONE/DATA OUTLET		THERMOSTAT OR TEMPERATURE SENSOR. RE: MECHANICAL		VOLTMETER
			CONTROL DEVICE: LS = LIMIT SWITCH, FS = FLOAT SWITCH, SV = SOLENOID VALVE		AMMETER SWITCH
			METER		VOLTMETER SWITCH
					PILOT LIGHT (R=RED, G=GREEN, A=AMBER)
					RELAY COIL (SUBSCRIPT INDICATES NUMBER OF CONTACTS)
					NORMALLY OPEN CONTACT (SUBSCRIPT INDICATES COIL AND CONTACT NUMBER)
					NORMALLY CLOSED CONTACT
					THERMAL OVERLOAD RELAY CONTACT
					SOLENOID
					NORMALLY OPEN PUSHBUTTON
					NORMALLY CLOSED PUSHBUTTON
					HAND-OFF-AUTO SWITCH

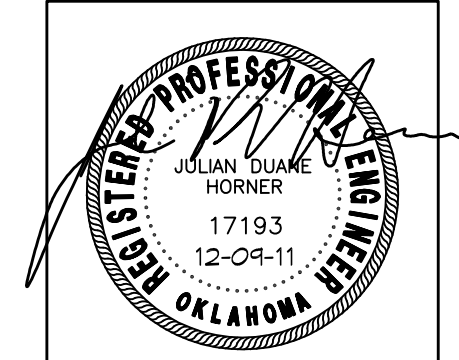
NOTE: ALL SYMBOLS ARE NOT NECESSARILY USED ON THIS PROJECT

ABBREVIATIONS

ABBREVIATION	DESCRIPTION
A OR AMP	AMPERES
AC	ALTERNATING CURRENT
AFF	ABOVE FINISHED FLOOR
AFG	ABOVE FINISHED GRADE
AHJ	AUTHORITY HAVING JURISDICTION
AL	ALUMINUM
AIC	ASYMMETRICAL AMPS INTERRUPTING CAPACITY
ARF	ABOVE RAISED FLOOR
AWG	AMERICAN WIRE GAUGE
AV	AUDIO/VISUAL
BACS	BUILDING AUTOMATION CONTROL SYSTEM
BFF	BELOW FINISHED FLOOR
BFG	BELOW FINISHED GRADE
BKR	BREAKER
BOF	BOTTOM OF FIXTURE
BLDG	BUILDING
C	CONDUIT
CB	CIRCUIT BREAKER
CCT	CIRCUIT
CU	COPPER
DDC	DIRECT DIGITAL CONTROL
EG	EQUIPMENT GROUND
ELEC	ELECTRICAL
EMCS	ENERGY MANAGEMENT & CONTROL SYSTEM
EMT	ELECTRICAL METALLIC TUBING
EP	EXPLOSION PROOF
ETC.	ET CETERA
EWC	ELECTRIC WATER COOLER
EXIST. OR E	EXISTING
FA	FIRE ALARM
FIC	FIBER OPTIC INTERCONNECT CENTER
FMC	FLEXIBLE METALLIC CONDUIT
GFI OR GFCI	GROUND FAULT CIRCUIT INTERRUPTER
GND.	GROUND
HPS	HIGH PRESSURE SODIUM
HV	HIGH VOLTAGE
HZ	HERTZ
IA	INTRUSION ALARM
IC	INTERCOM
IE	ISOLATED
IG	ISOLATED GROUND
KV	KILOVOLTS
KVA	KILOVOLT AMPERES
KWH	KILOWATT HOUR
LTFMC	LIQUID TIGHT FLEXIBLE METALLIC CONDUIT
LV	LOW VOLTAGE
MAX	MAXIMUM
MCA	MINIMUM CIRCUIT AMPACITY
MCB	MAIN CIRCUIT BREAKER
MCC	MOTOR CONTROL CENTER
MCP	MOTOR CIRCUIT PROTECTOR
MH	MANHOLE
MIN	MINIMUM
MISC.	MISCELLANEOUS
MLO	MAIN LUGS ONLY
MTC	MOUNTING
N/A	NOT APPLICABLE
N.C.	NORMALLY CLOSED
NEC	NATIONAL ELECTRICAL CODE
NEUT.	NEUTRAL
NIC	NOT IN CONTRACT
N.O.	NORMALLY OPEN
NL	NIGHT LIGHT (CONNECT TO UNSWITCHED CIRCUIT)
OC	ON CENTER
OH	OVERHEAD
PAF	PAINT AFTER FABRICATION
PC	PART CIRCUIT
PNL	PANELBOARD
POS	POINT OF SALE
PTT	PUSH TO TEST
PVC	POLYVINYL CHLORIDE
REF.	REFERENCE
RGSC	RIGID GALVANIZED STEEL CONDUIT
SCH.	SCHEDULE
SPECS	CONTRACT SPECIFICATIONS
SPDT	SINGLE POLE DOUBLE THROW
SPST	SINGLE POLE SINGLE THROW
S/N	SOLID NEUTRAL
TOF	TOP OF FIXTURE
TTB	TELEPHONE TERMINAL BOARD
TVSS	TRANSIENT VOLTAGE SURGE SUPPRESSION
TYP	TYPICAL
UG	UNDERGROUND
UGC	UNDERGROUND COMMUNICATIONS
UGE	UNDERGROUND ELECTRIC
UGT	UNDERGROUND TELEPHONE
UL	UNDERWRITERS LABORATORIES
UNO	UNLESS NOTED OTHERWISE
V	VOLTS
VFD	VARIABLE FREQUENCY DRIVE
W	WATTS
WP	WEATHERPROOF
WPWU	WEATHERPROOF-WHILE-IN-USE
W/O	WITH
XFMR	TRANSFORMER
ø	PHASE
+48"	MOUNTING HEIGHT ABOVE FINISHED FLOOR TO CENTER, UNO
-48"	MOUNTING DEPTH BELOW FINISHED FLOOR TO CENTER, UNO



1112 NORTH WALKER
 OKLAHOMA CITY, OK. 73103
 VOICE: 405.605.1044
 FACSIMILE: 405.606.7044
 WWW.STUDIOARC.COM



ARCHITECTURE:
 Studio Architecture, P.C.
 Tel: 405.605.1044
 Fax: 405.606.7044

STRUCTURAL:
 Wallace Engineering
 Tel: 918.584.8888
 Fax: 918.584.8689

MECHANICAL & PLUMBING:
 DHO Engineering
 Tel: 405.947.8524
 Fax: 405.947.0472

ELECTRICAL:
 Horner Associate Engineering
 Tel: 405.801.2528
 Fax: 405.801.2529

CLAREMORE CIVIC EXPO CENTER
 SHOP REPLACEMENT
 CLAREMORE, OKLAHOMA

Revision

Project Number
 11 019

Sheet Title
 ELECTRICAL LEGEND AND ABBREVIATIONS

Date
 12/09/2011

Sheet No.
 E1.0