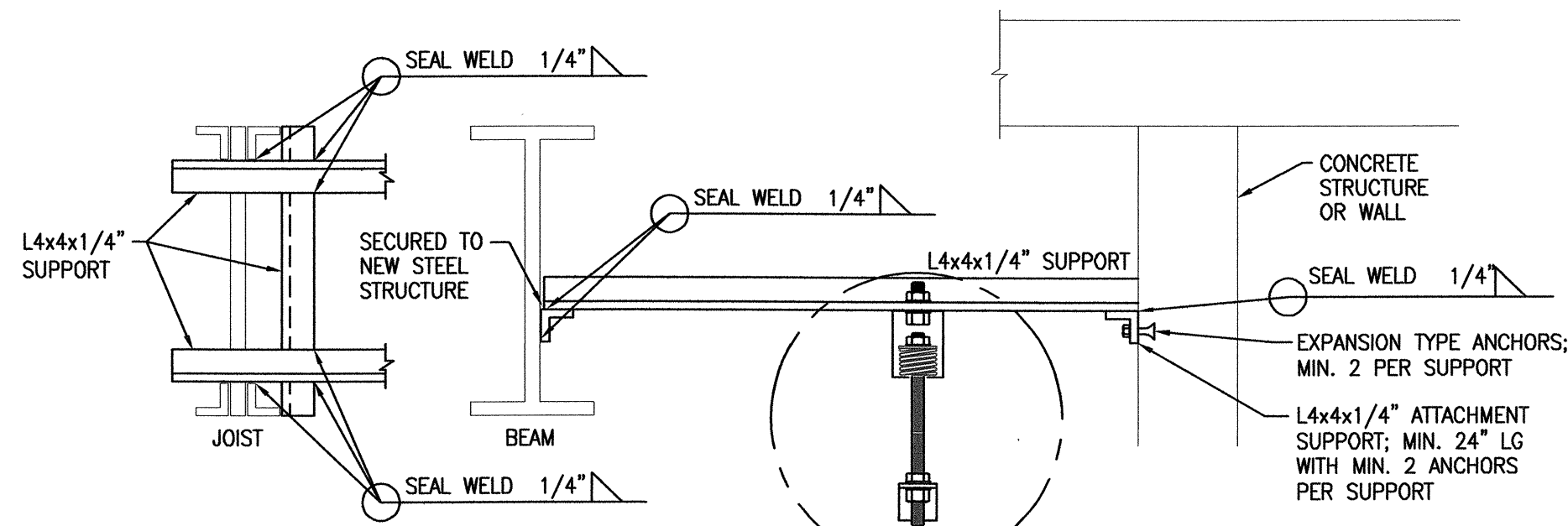
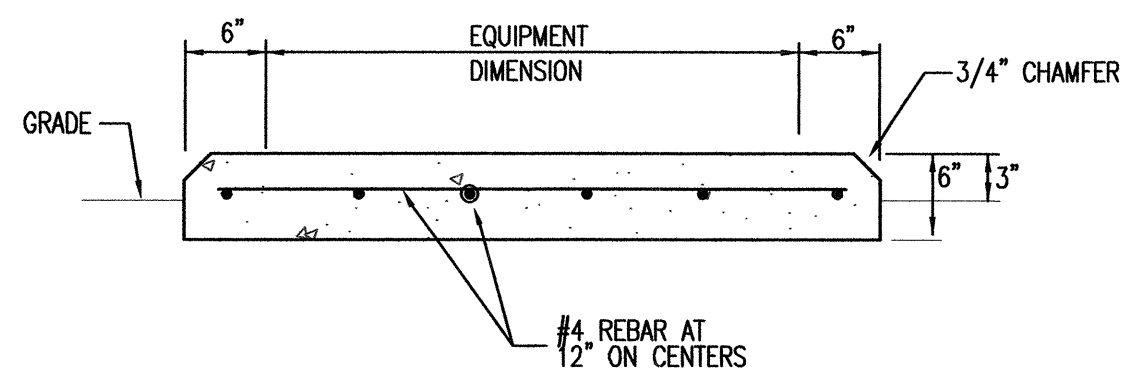


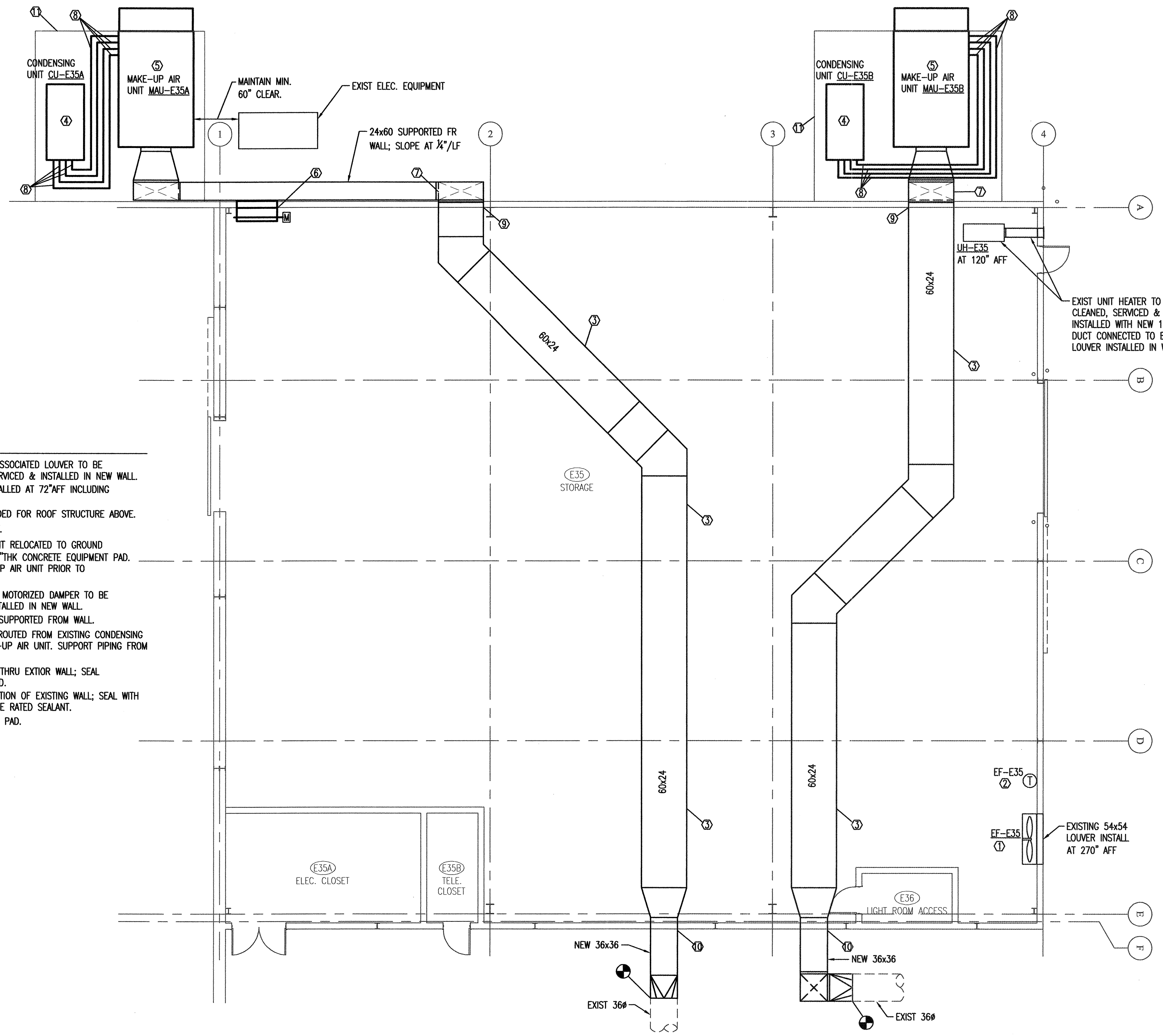
2 DUCT SUPPORT DETAIL
M2.02 SCALE: NONE



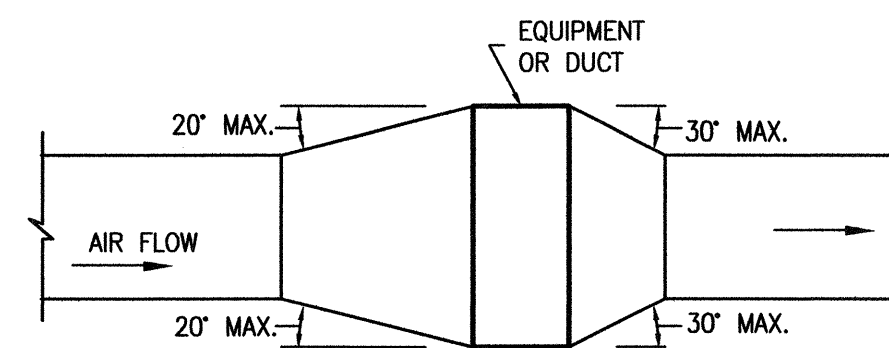
3 EQUIPMENT SUPPORT DETAIL
M2.02 SCALE: NONE



4 EQUIPMENT FOUNDATION PAD DETAIL
M2.02 SCALE: NONE



1 MECHANICAL FLOOR PLAN
M2.02 SCALE: 1/8" = 1'-0"



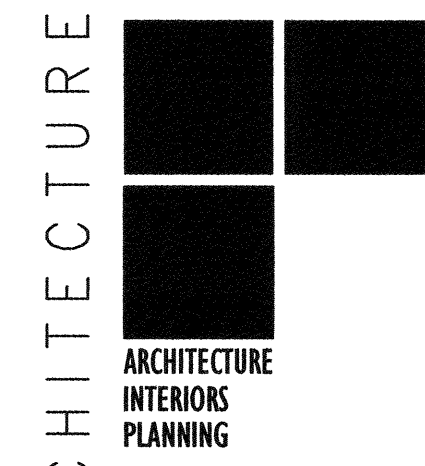
5 TYPICAL DUCT TRANSITION DETAIL
M2.02 SCALE: NONE

KEYED NOTES

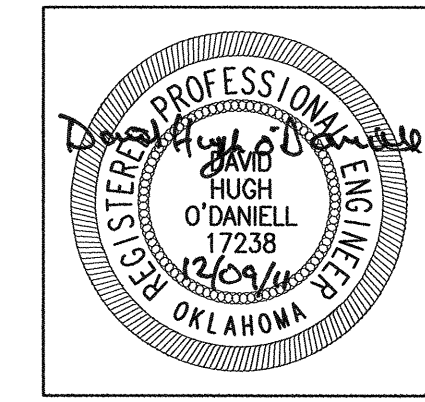
- 1 EXISTING FAN EF-E35 W/ASSOCIATED LOUVER TO BE THOROUGHLY CLEANED, SERVICED & INSTALLED IN NEW WALL.
- 2 EXISTING THERMOSTAT INSTALLED AT 72" AFF INCLUDING CONTROL WIRING TO FAN.
- 3 NEW 60x24 DUCT SUSPENDED FOR ROOF STRUCTURE ABOVE.
- 4 EXISTING CONDENSING UNIT.
- 5 EXISTING MAKE-UP AIR UNIT RELOCATED TO GROUND LOCATION, INSTALLED ON 6" THK CONCRETE EQUIPMENT PAD. CLEAN & SERVICE MAKE-UP AIR UNIT PRIOR TO INSTALLATION.
- 6 EXIST 54x54 LOUVER WITH MOTORIZED DAMPER TO BE CLEANED, SERVICED & INSTALLED IN NEW WALL.
- 7 60x24 VERTICAL UP WALL SUPPORTED FROM WALL.
- 8 NEW REFRIGERANT PIPING ROUTED FROM EXISTING CONDENSING UNIT TO RELOCATED MAKE-UP AIR UNIT. SUPPORT PIPING FROM SLAB MIN 6" ABV SLAB.
- 9 60x24 DUCT PENETRATION THRU EXTERIOR WALL; SEAL WEATHERTIGHT, ALL-AROUND.
- 10 NEW 36x36 DUCT PENETRATION OF EXISTING WALL; SEAL WITH FIRE STOP MATERIAL & FIRE RATED SEALANT.
- 11 NEW CONCRETE EQUIPMENT PAD.

BASE BID
ALL WORK ASSOCIATED WITH MAKE-UP AIR UNITS MAU-E35A & MAU-E35B AND CONDENSING UNITS CU-E35A & CU-E35B SHALL BE DELETED. DELETE KEYED NOTES 3,4,5,6,7,8,9,10 & 11.

ALTERNATE #1
ALL WORK ASSOCIATED WITH MAKE-UP AIR UNITS MAU-E35A & MAU-E35B AND CONDENSING UNITS CU-E35A & CU-E35B SHALL BE PART OF ALTERNATE #1.



1112 NORTH WALKER
OKLAHOMA CITY, OK 73103
VOICE: 405.605.1044
FACSIMILE: 405.606.7044
WWW.STUDIOARC.COM



ARCHITECTURE:
Studio Architecture, P.C.
Tel: 405.605.1044
Fax: 405.606.7044

STRUCTURAL:
Wallace Engineering
Tel: 918.584.5838
Fax: 918.584.8689

MECHANICAL & PLUMBING:
DHO Engineering
Tel: 405.947.8524
Fax: 405.947.0472

ELECTRICAL:
Horner Associate Engineering
Tel: 405.801.2528
Fax: 405.801.2529

CLAREMORE CIVIC EXPO CENTER
SHOP REPLACEMENT
CLAREMORE, OKLAHOMA

Revision	MECHANICAL FLOOR PLAN
Project Number	11 019
Sheet Title	
Date	12/9/2011
Sheet No.	
M2.02	

DHO ENGINEERING
Telephone: 405-947-8524
Facsimile: 405-947-0472
3629 NORTHWEST 24th STREET
OKLAHOMA CITY, OK 73107
OK Cert. of Auth. No. 3955
Expiration 06/30/12