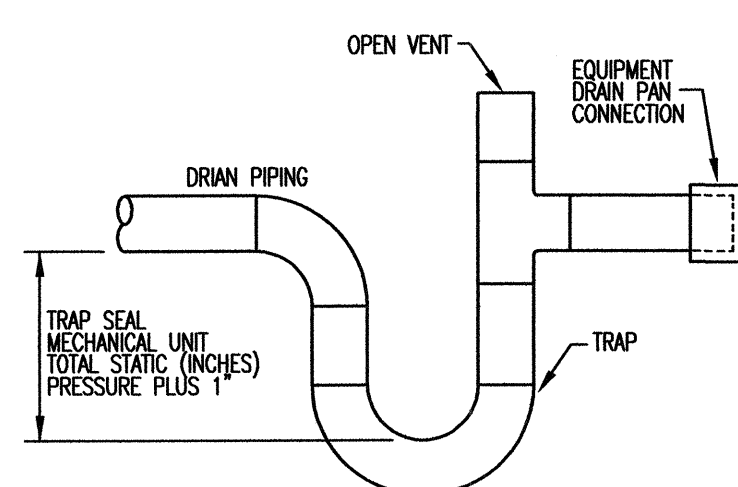


REF PLANS FOR PIPE SIZES

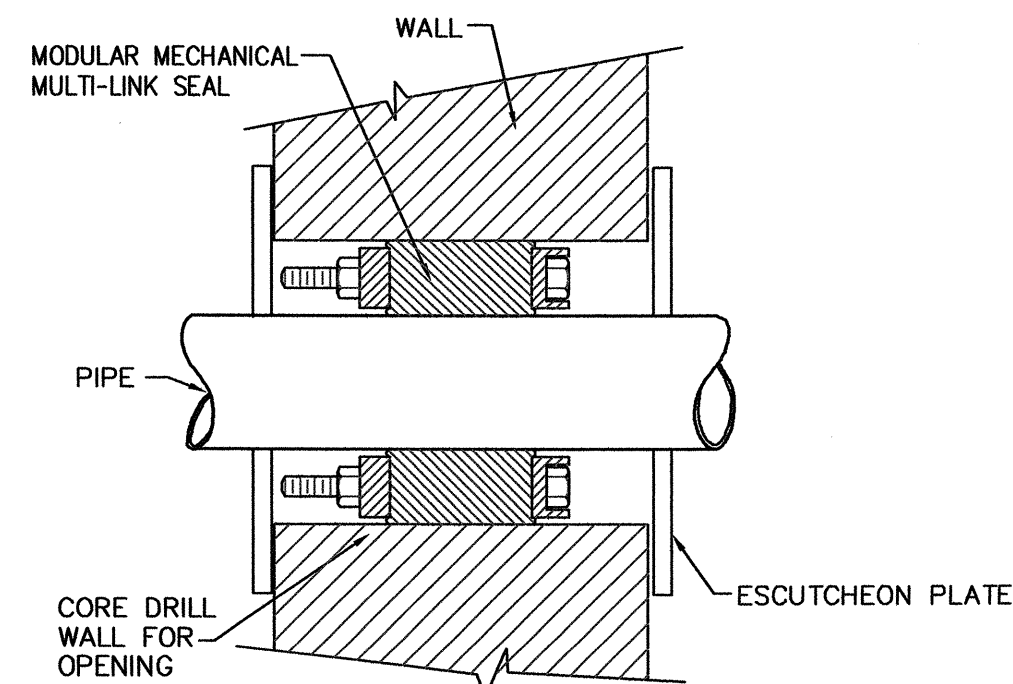
2 TYPICAL EQUIPMENT GAS CONNECTION DETAIL
P2.01 SCALE: NONE



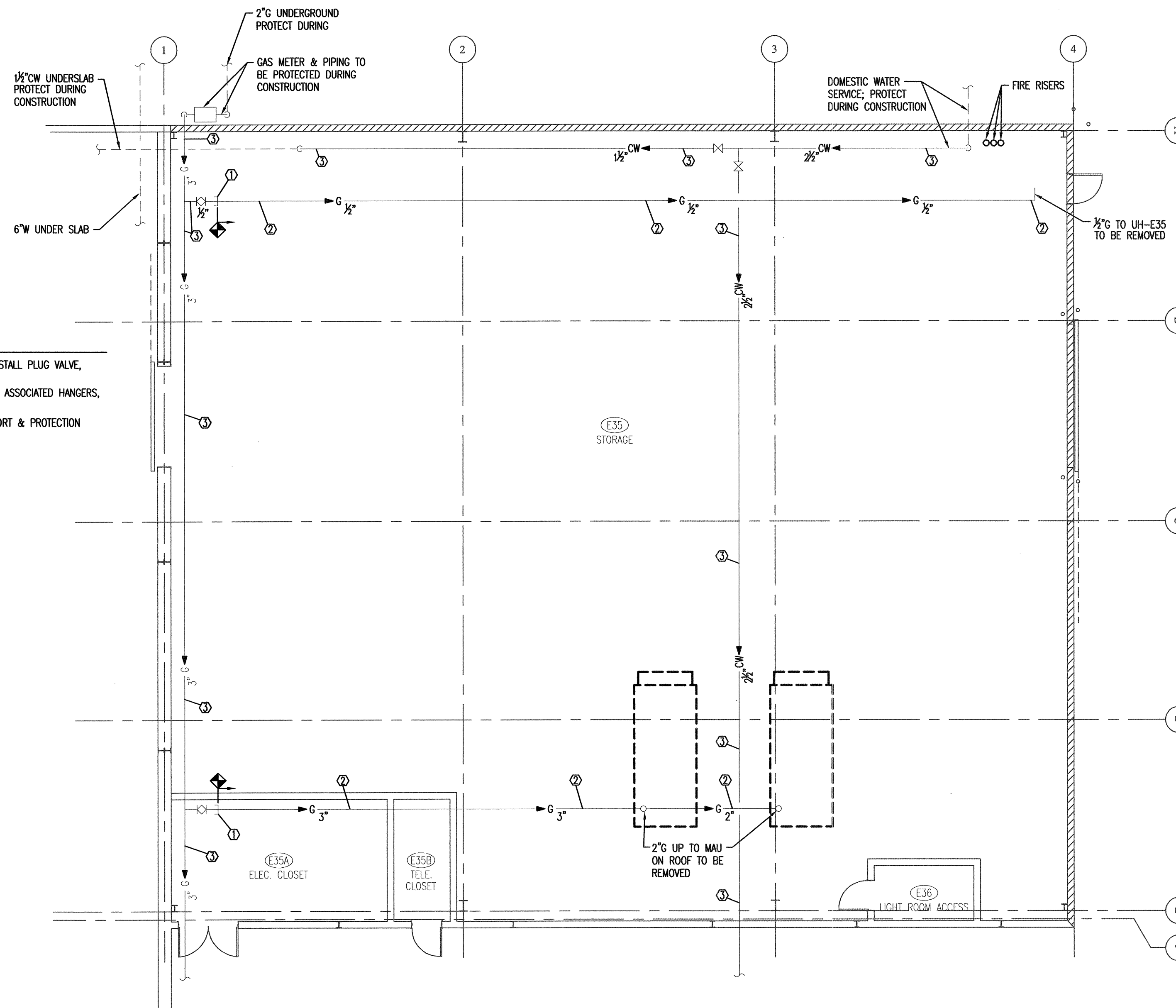
3 CONDENSATE TRAP DETAIL
P2.01 SCALE: NONE

COPPER TUBING		
PIPE SIZES	MIN. SLEEVE OPENING *	MODEL NO.
3/8" - 3"	1" LARGER THAN PIPE O.D.	LS-200-C
4"	1-1/2" LARGER THAN PIPE O.D.	LS-300-C
STEEL PIPE		
PIPE SIZES	MIN. SLEEVE OPENING *	MODEL NO.
1/2" - 1-1/2"	1" LARGER THAN PIPE O.D.	LS-200-C
2" - 3"	1-1/2" LARGER THAN PIPE O.D.	LS-300-C
4" - 8"	2" LARGER THAN PIPE O.D.	LS-325-C
10" & LARGER	3" LARGER THAN PIPE O.D.	LS-400-C
CAST IRON PIPE		
PIPE SIZES	MIN. SLEEVE OPENING *	MODEL NO.
2 - 3	1" LARGER THAN PIPE O.D.	LS-300-C
4 - 6	2.7" LARGER THAN PIPE O.D.	LS-425-C
8 & LARGER	3.5" LARGER THAN PIPE O.D.	LS-475-C

* SLEEVE OPENING SIZE SHALL BE AS RECOMMENDED BY BY MODULAR MECHANICAL MULTI-LINK SEAL MANUFACTURER.

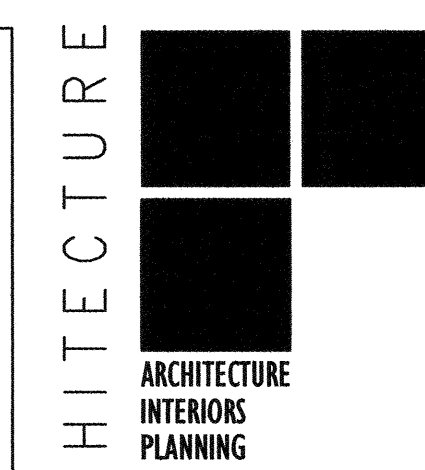


4 TYPICAL PIPE THRU EXTERIOR WALL PENETRATION DETAIL
P2.01 SCALE: NONE

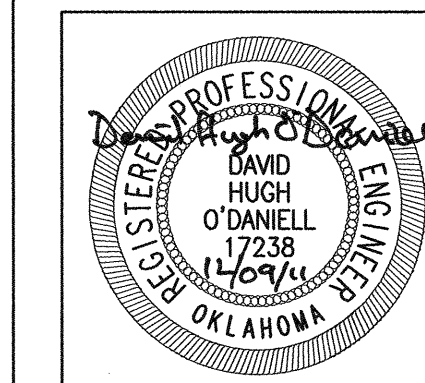


- KEYED NOTES**
- ① REMOVE PIPE TO THIS POINT & INSTALL PLUG VALVE, NIPPLE & CAP.
 - ② PIPING TO BE REMOVED INCLUDING ASSOCIATED HANGERS, COMPONENTS, ETC.
 - ③ PIPING TO REMAIN. PROVIDE SUPPORT & PROTECTION DURING CONSTRUCTION.

1 PLUMBING DEMOLITION FLOOR PLAN
P2.01 SCALE: 1/8" = 1'-0"



STUDIO ARCHITECTURE
1112 NORTH WALKER
OKLAHOMA CITY, OK. 73103
VOICE: 405.605.1044
FACSIMILE: 405.606.7044
WWW.STUDIOARC.COM



ARCHITECTURE:
Studio Architecture, P.C.
Tel: 405.605.1044
Fax: 405.606.7044

STRUCTURAL:
Wallace Engineering
Tel: 918.584.5858
Fax: 918.584.8689

MECHANICAL & PLUMBING:
DHO Engineering
Tel: 405.947.8524
Fax: 405.947.0472

ELECTRICAL:
Horner Associate Engineering
Tel: 405.801.2528
Fax: 405.801.2529

CLAREMORE CIVIC EXPO CENTER
SHOP REPLACEMENT
CLAREMORE, OKLAHOMA

Revision
PLUMBING DEMOLITION FLOOR PLAN

Project Number
11 019
Sheet Title

Date
12/9/2011
Sheet No.

P2.01

DHO ENGINEERING
Telephone: 405-947-8524
Facsimile: 405-947-0472
3629 NORTHWEST 24th STREET
OKLAHOMA CITY, OK 73107
OK Cert. of Auth. No. 3955
Expiration 06/30/12